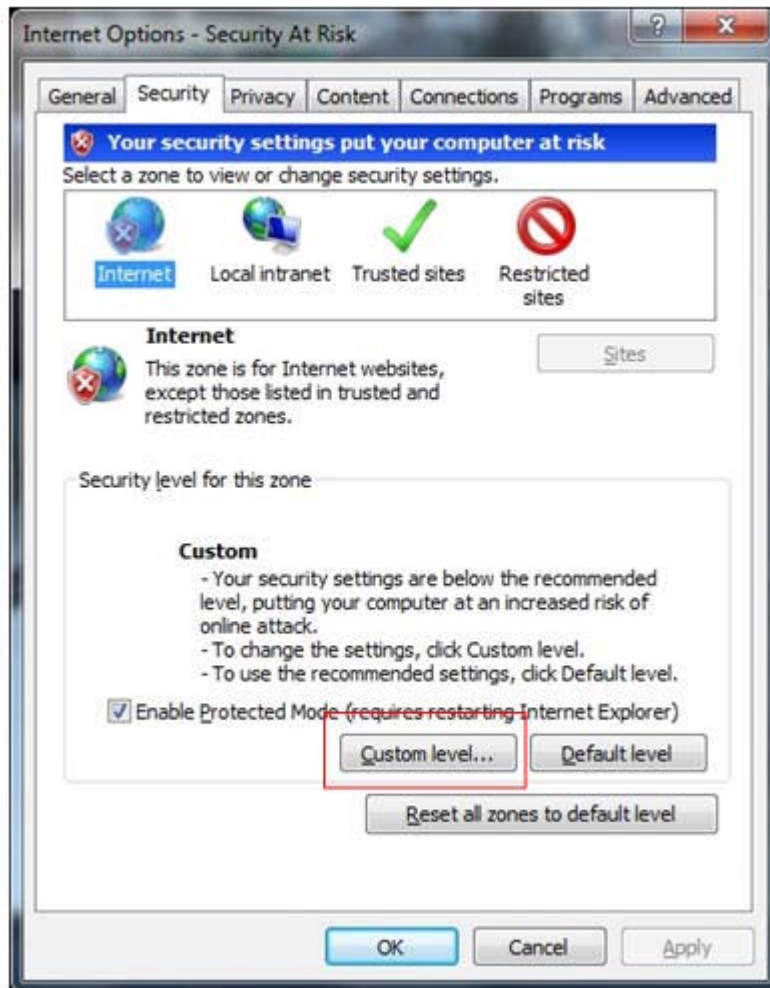
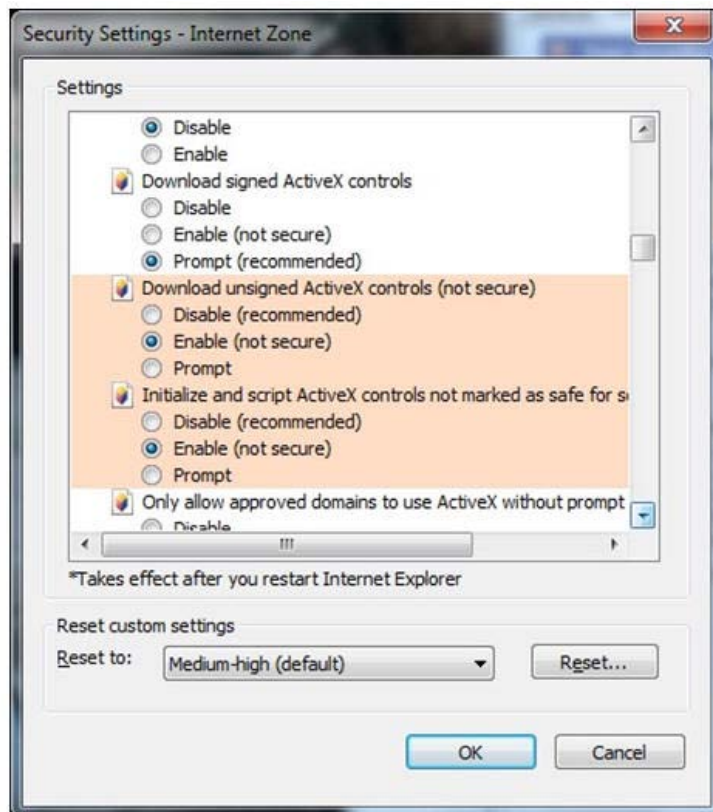
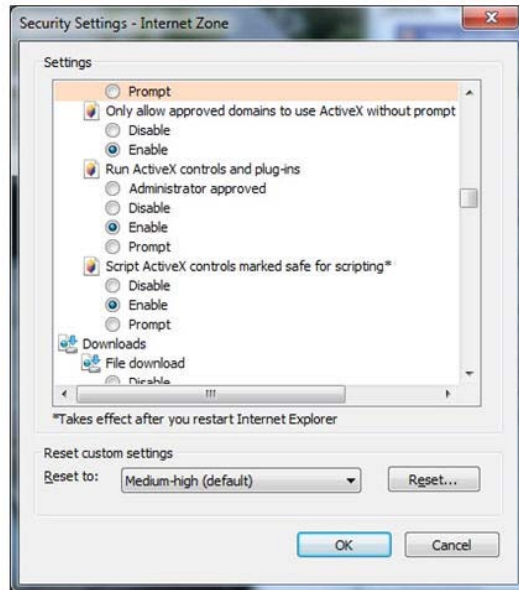
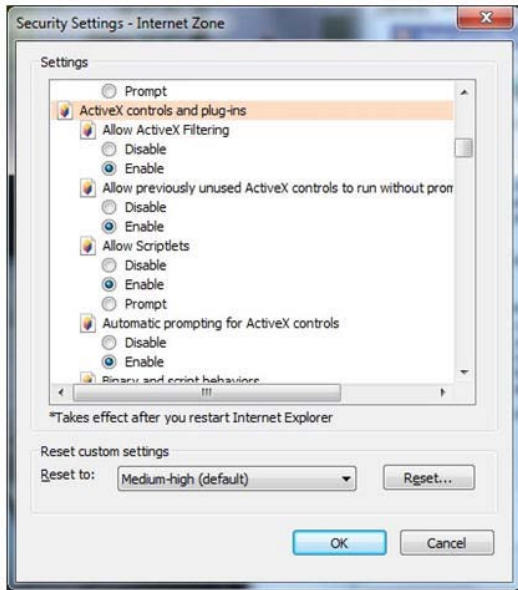


# User Guide

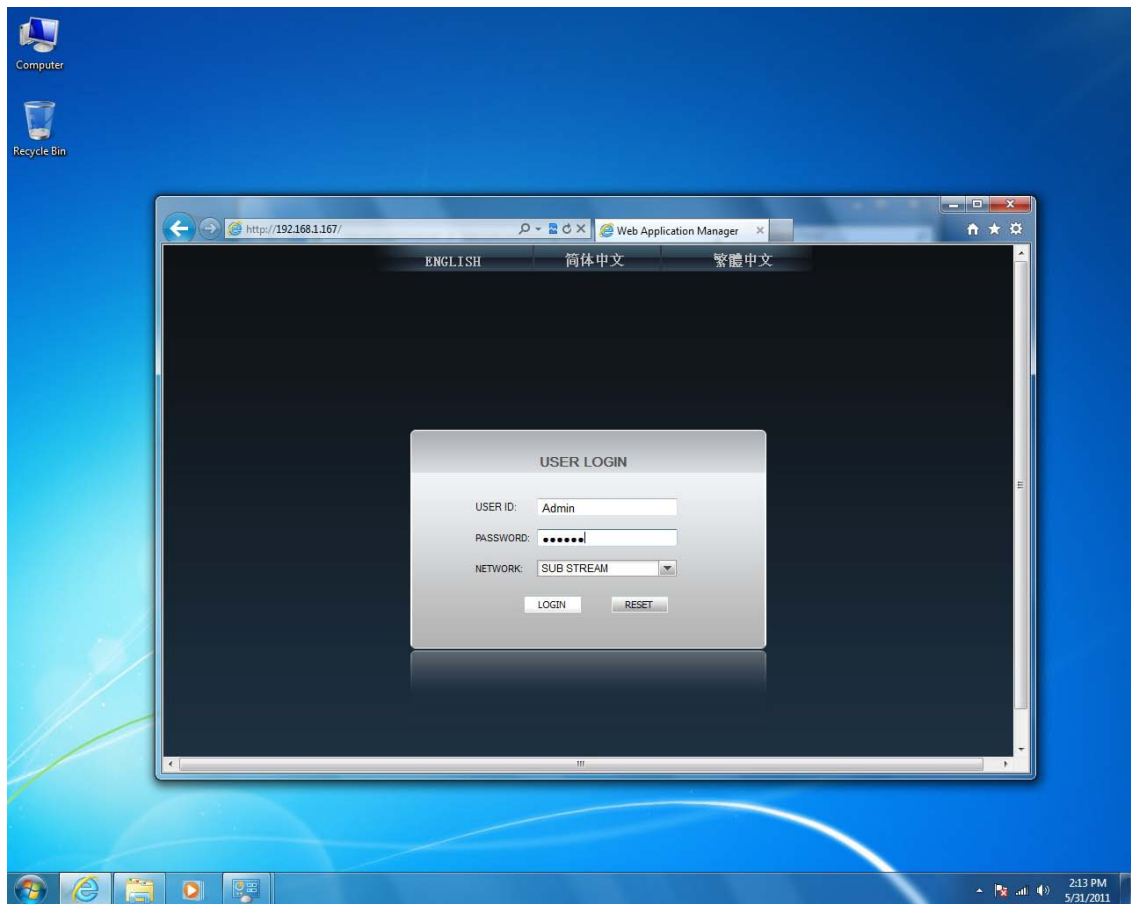
**Step 1 – open custom level as below path to set ActiveX controls and plug-ins**  
**IE – Internet Option – Security - Custom level (see below iconography)**



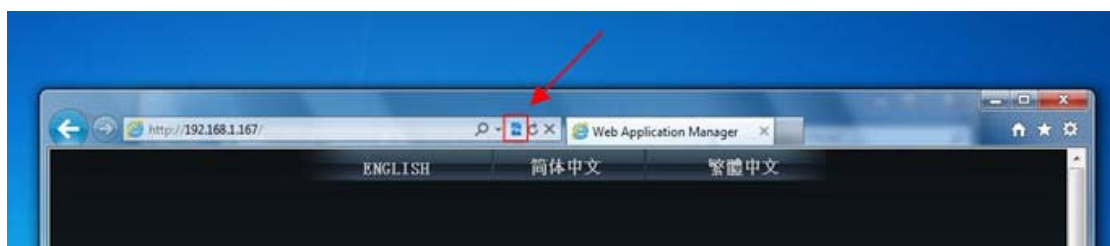
**Step 2 – set ActiveX controls and plug-ins**  
**Change all ActiveX columns to Enable or prompt (see below iconography)**



**Step 3 – after all ActiveX columns setting well done, press “OK” to save and then refresh web page to login**



**Step 4 – if login failure and your IE version is IE9, please try to click the compatibility icon in the IE address column to ensure your IE9 fit for low version plug-ins**



**Remark: if you PC operation system are Windows 7 / Windows Vista, please run IE as an administrator.**